

**MARIS STELLA HIGH SCHOOL (PRIMARY)****WEIGHTED ASSESSMENT****SCIENCE****3 JULY 2020****BOOKLET A**

NAME: \_\_\_\_\_ ( )

CLASS: Primary 3 ( )

12 questions

24 marks

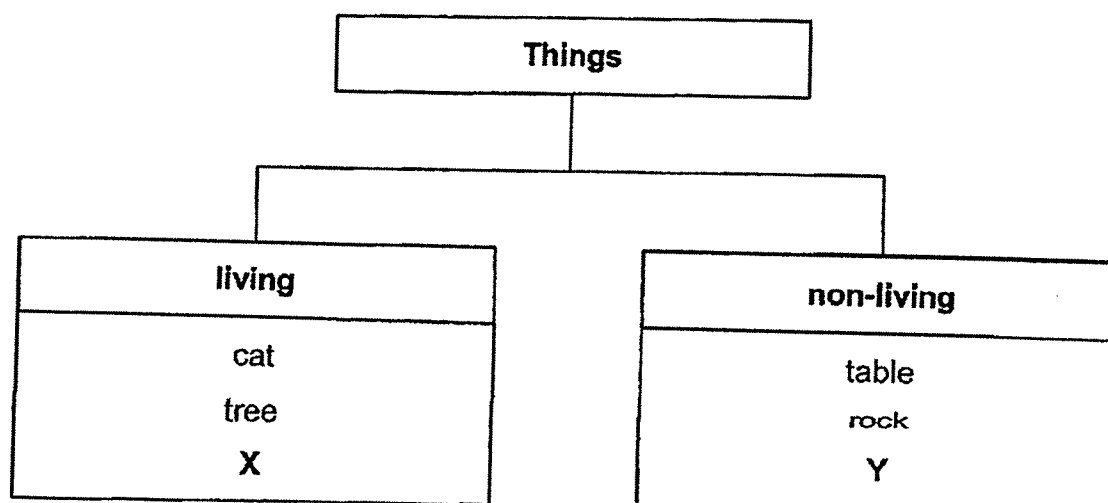
Total Time for Booklets A &amp; B: 50 minutes

DO NOT OPEN THIS BOOKLET UNTIL YOU ARE TOLD TO DO SO.

FOLLOW ALL INSTRUCTIONS CAREFULLY.

For each question from 1 to 12, four options are given. One of them is the correct answer. Make your choice (1, 2, 3 or 4) and shade your answer on the Optical Answer Sheet (OAS).  
(24 marks)

- 1 Study the classification chart below.



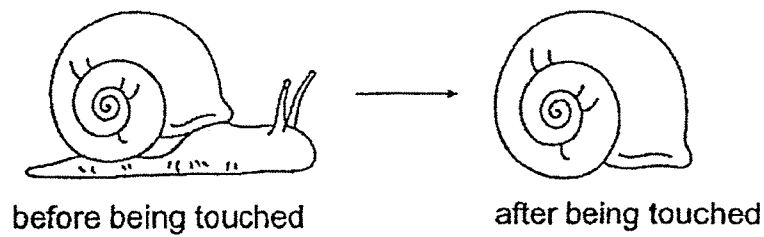
Which of the following could X and Y be?

	X	Y
(1)	car	ball
(2)	robot	tree
(3)	flower	aeroplane
(4)	caterpillar	butterfly

- 2 Which one of the following statements is true for bacteria?

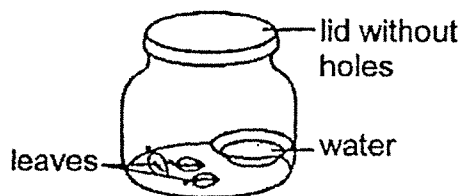
- (1) They cannot reproduce.
- (2) They are all harmful to humans.
- (3) They do not need food to survive.
- (4) They can only be seen under the microscope.

- 3 Tom observed that Animal S moves into its shell when it is being touched.

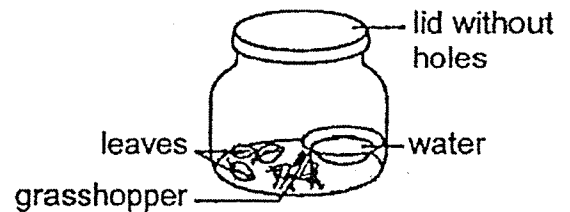


Based on the observation of Animal S, it shows us that living things \_\_\_\_\_.

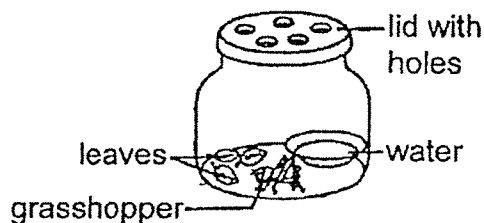
- (1) grow
  - (2) reproduce
  - (3) need air, food and water
  - (4) respond to changes around them
- 4 Leonard wants to find out if living things need air to survive.



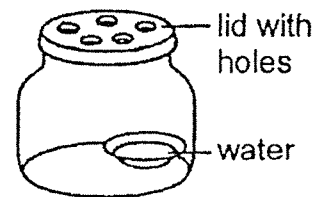
**Set-up A**



**Set-up B**



**Set-up C**



**Set-up D**

Which two set-ups should she use?

- (1) A and D
- (2) B and C
- (3) A and C
- (4) B and D

- 5 Study the table below.

Animal	Lays eggs	Has scales	Has legs
P			✓
Q	✓	✓	✓
R	✓	✓	

Key  
✓ : present

Which of the following animals is/are reptiles?

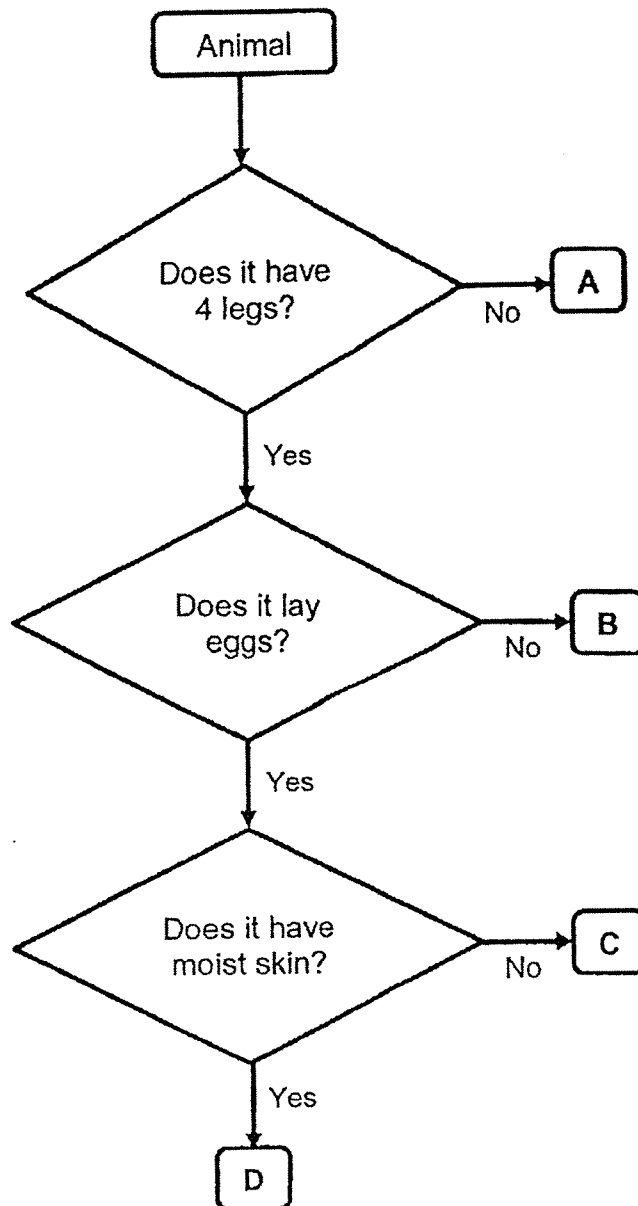
- (1) Q only
  - (2) R only
  - (3) P and Q only
  - (4) Q and R only
- 6 The table below shows the characteristics of animals A and B.

	A	B
Does it have six legs?	Yes	No
Does it feed its young with milk?	No	Yes

Which of the following could animals A and B be?

	A	B
(1)	mammal	insect
(2)	insect	fish
(3)	insect	mammal
(4)	reptiles	mammal

7 Study the flowchart.



Which of the following correctly represents A, B, C and D?

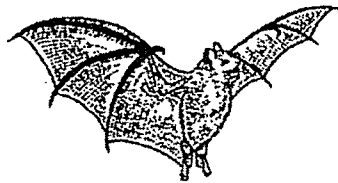
	A	B	C	D
(1)	mammal	amphibian	insect	bird
(2)	insect	mammal	reptile	amphibian
(3)	bird	mammal	fish	reptile
(4)	mammal	reptile	bird	insect

- 8 Susan recorded a few characteristics of Animal R.

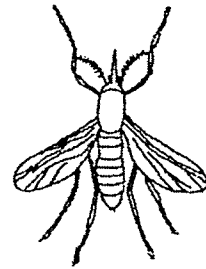
- lays eggs
- has a beak
- has a pair of wings
- has one pair of legs

Which one of the following animals is most likely Animal R?

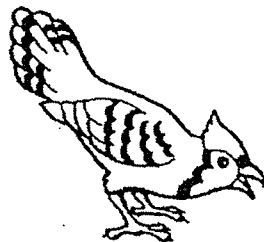
(1)



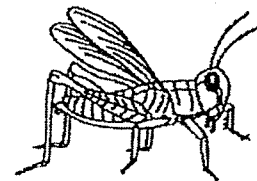
(2)



(3)



(4)



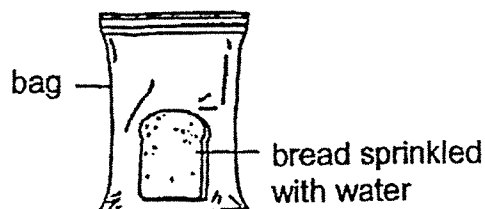
- 9 Adam listed three similarities between the grasshopper and mosquito.

- A Both lay eggs.
- B Both their young resemble the adults.
- C Both have three stages in their life cycles.

Which of the following statement(s) is/are correct?

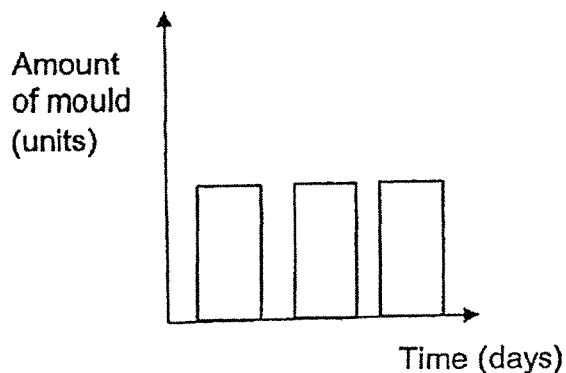
- (1) A only
- (2) C only
- (3) B and C only
- (4) A, B and C

- 10 Mary prepared the set-up shown below and placed it on the kitchen table. She observed the amount of mould on the bread over ten days.

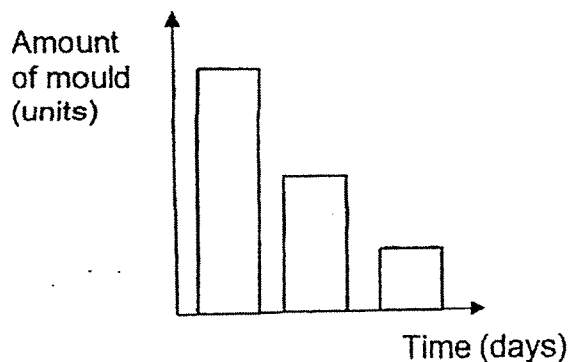


Which of the following graphs correctly shows the amount of mould on the bread over the ten days?

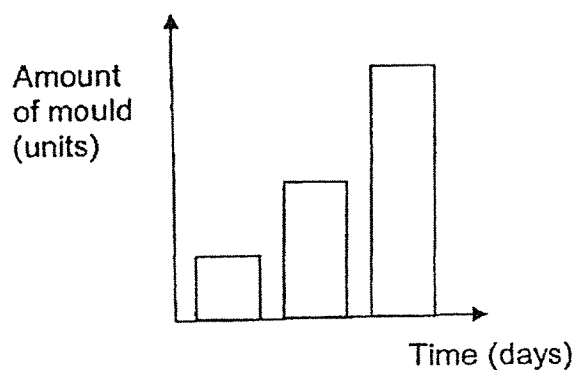
(1)



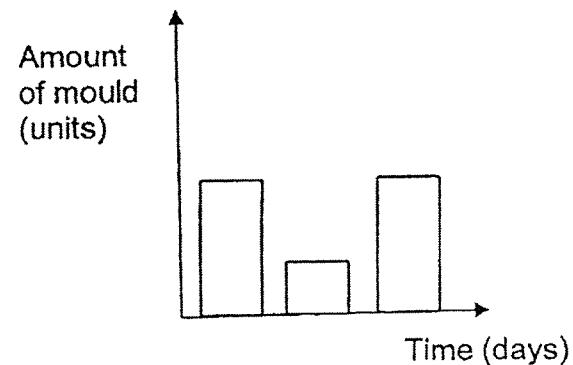
(2)



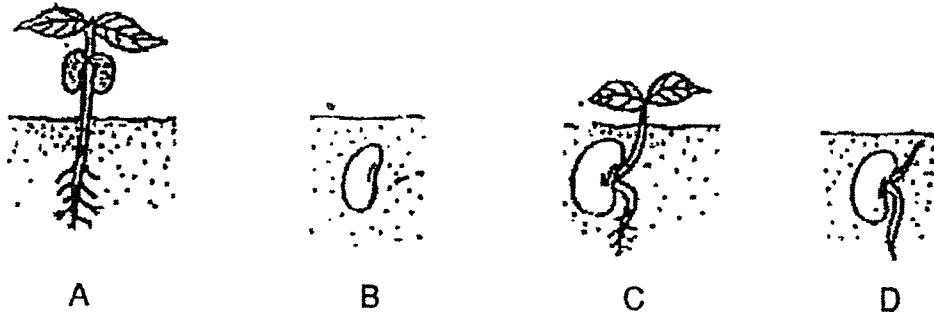
(3)



(4)



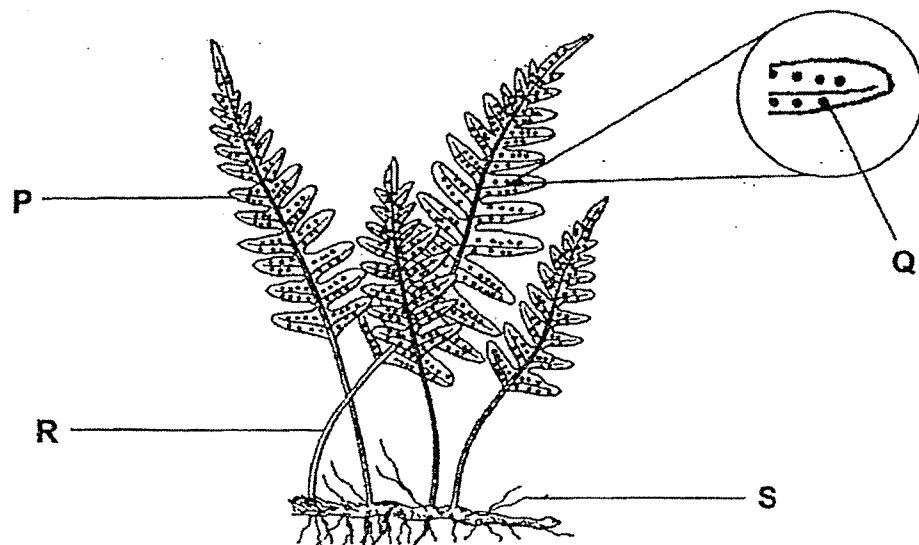
- 11 The pictures below show the different stages of the development of a plant.



Which of the following shows the correct order of the development of plant in a life cycle?

- (1) A → D → B → C
- (2) B → D → A → C
- (3) C → A → B → D
- (4) D → C → B → A

- 12 Study the plant shown below.



Which part of the plant holds the plant firmly to the ground?

- (1) P
- (2) Q
- (3) R
- (4) S





**MARIS STELLA HIGH SCHOOL (PRIMARY)**

**WEIGHTED ASSESSMENT**

**SCIENCE**

**3 JULY 2020**

**BOOKLET B**

NAME: \_\_\_\_\_ (                      )

CLASS: Primary 3 (                      )

5 questions

16 marks

Total Time for Booklets A & B:        50 minutes.

DO NOT OPEN THIS BOOKLET UNTIL YOU ARE TOLD TO DO SO.

FOLLOW ALL INSTRUCTIONS CAREFULLY.

Booklet A: \_\_\_\_\_ / 24

Booklet B: \_\_\_\_\_ / 16

Grand Total: \_\_\_\_\_ / 40

Parent's Signature: \_\_\_\_\_

For questions 13 to 17, write your answers in the space provided. The marks for each question is shown in the brackets [ ] at the end of each question. (16 marks)

- 13 The table below shows the mass of Plant P from January to December.

	January	June	December
Mass (g)	10	30	50

- (a) Describe the change in mass of Plant P from January to December. [1]

---



---

- (b) What characteristic of living things does the change in mass of Plant P show? [1]

---



---

Plant X was watered daily but Plant Y was not watered at all. The diagrams below show Plant X and Plant Y after a month.



Plant X



wilted plant

Plant Y

- (c) What characteristic of living things does the observations show? [1]

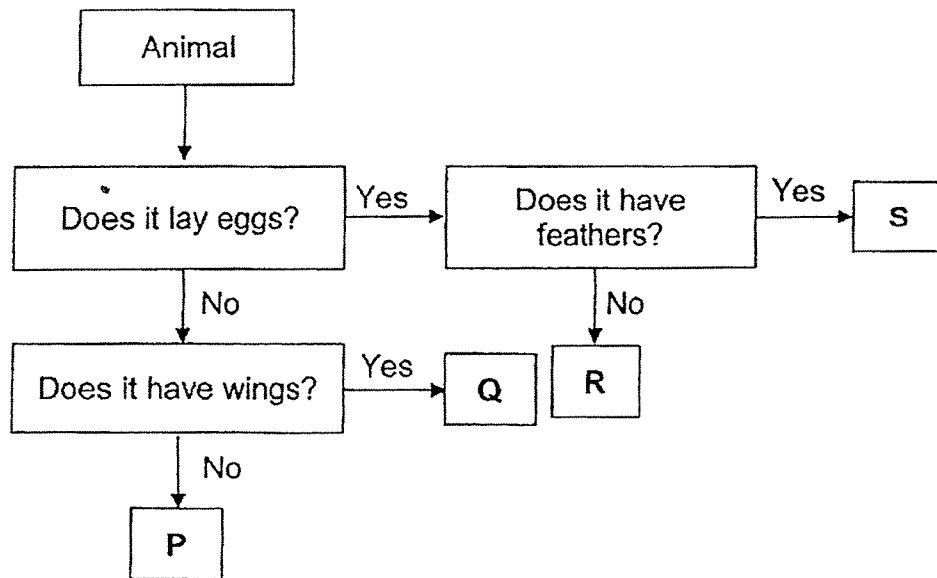
---



---

	3
--	---

- 14 Study the classification chart.



- (a) Describe the characteristics of animal R. [1]

---

---

- (b) State one similarity between animals R and S. [1]

---

---

- (c) State one difference between animals P and S. [1]

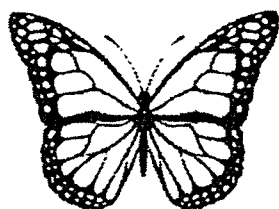
---

---

- (d) Which letter, P, Q, R or S, can represent a fish? [1]

---

- 15 A, B, C and D are the different stages in the life cycle of a butterfly.



A



B

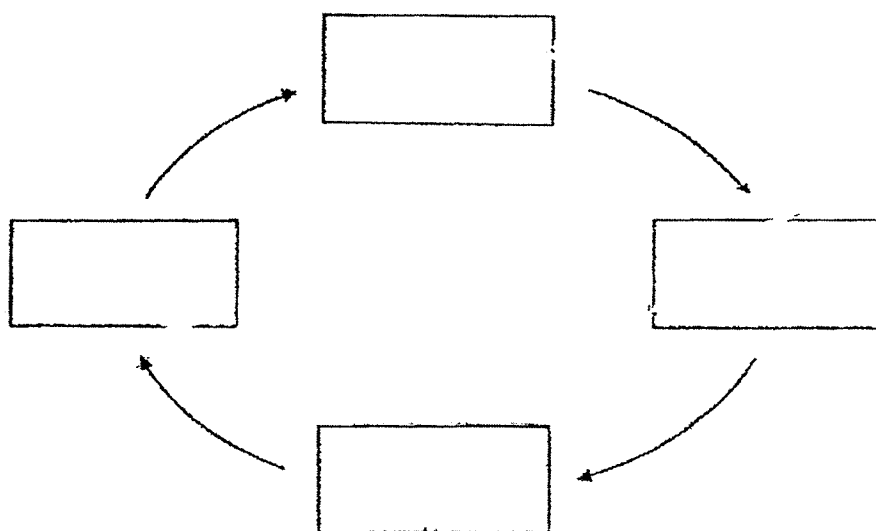


C



D

- (a) Complete the life cycle of the butterfly by filling in letters A, B, C and D in the boxes. [1]



- (b) At which stages, A, B, C and D, do the butterfly not move? [1]

---

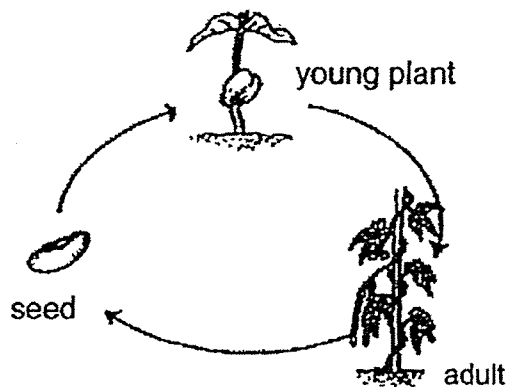
- (c) At which stage, A, B, C or D, does the butterfly feed the most? [1]

---

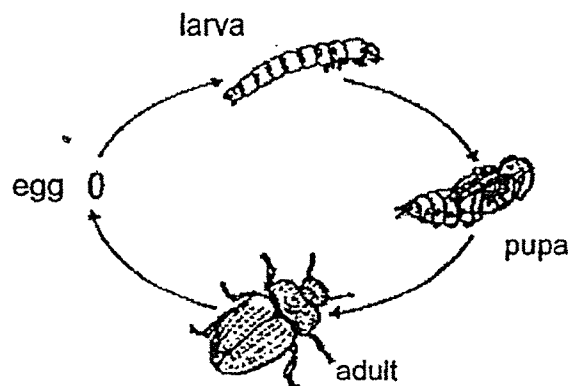
- (d) Name stage A. [1]

---

- 16 The diagrams below show the life cycle of a flowering plant and a beetle.



Life cycle of a flowering plant



Life cycle of a beetle

- (a) State the difference in the method of reproduction for a flowering plant and a beetle. [1]

---

---

- (b) Other than the method of reproduction, state another difference between the life cycles of a flowering plant and a beetle. [1]

---

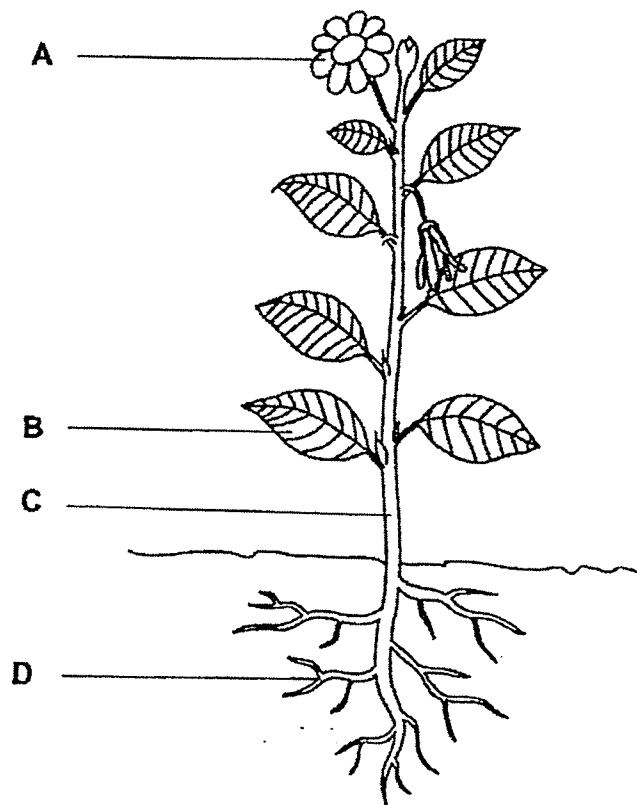
---

- (c) Why are life cycles important to living things? [1]

---

---

17 The diagram below shows a flowering plant:



(a) What is the function of part C? [1]

---

---

(b) State a difference between flowering plants and non-flowering plants. [1]

---

---

END OF BOOKLET B

	2
--	---

## ANSWER KEY

**YEAR : 2020**  
**LEVEL : PRIMARY 3**  
**SCHOOL : MARIS STELLA**  
**SUBJECT : SCIENCE**  
**TERM : WEIGHTED ASSESSMENT (SA1)**

### BOOKLET A

Q1	3	Q2	4	Q3	4	Q4	2
Q5	4	Q6	3	Q7	2	Q8	3
Q9	1	Q10	3	Q11	3	Q12	4

### BOOKLET B

Q13 a) The mass of plant P increased

b) Living things grow.

c) Living things needs water to survive.

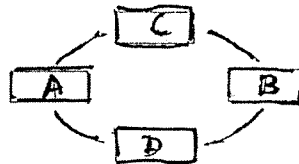
Q14 a) Animal B lays eggs and does not have feathers.

b) Both lay eggs.

c) Animal S has feathers but Animal P does not.

d) Animal P can represent a fish because it lays eggs and does not have feathers.

Q15 a)



b) Stages C and D does not move.

c) Stage B

d) A is the adult

Q16 a) The life cycle of the plant reproduces by seeds but the life cycle of a beetle starts with egg.

b) Life cycle of a plant has 3 stages but the life cycle of the beetle has 4 stages.

c) Life cycle are important because it will keep things alive.

Q17 a) Part C will hold the plant up right.

b) flowering plants has flowers but non-flowering plant does not have flowers.

